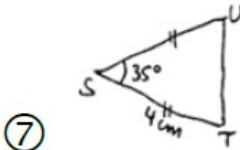
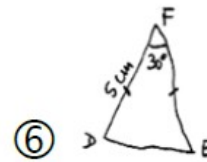
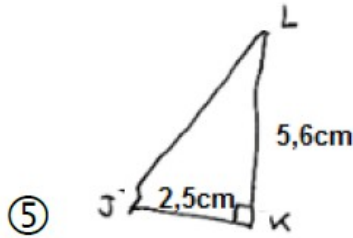
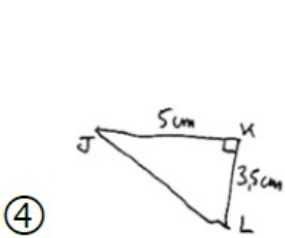
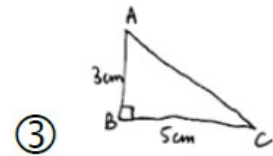
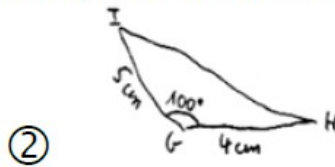
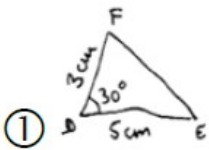
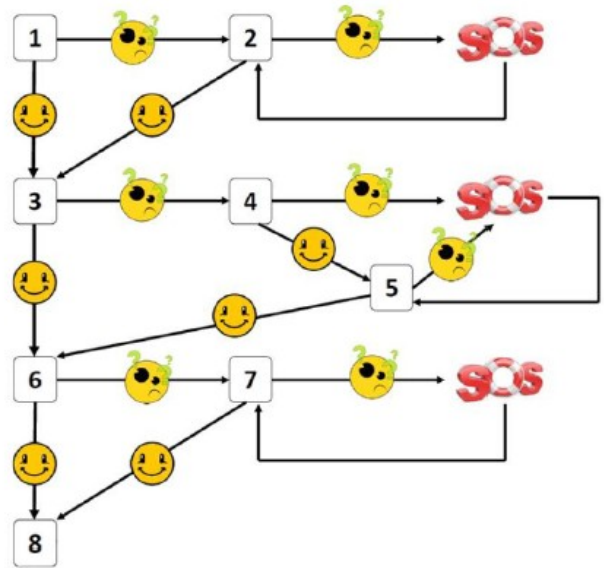
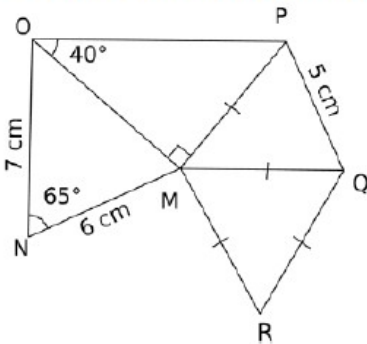


Exercice 1

Construis les triangles ci-dessous en vraie grandeur, en suivant le parcours fléché.



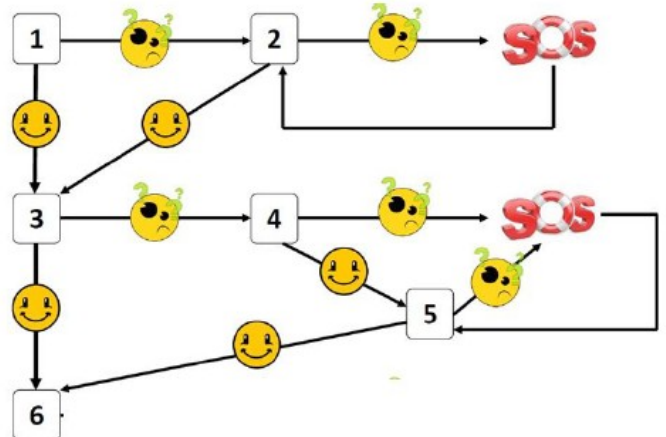
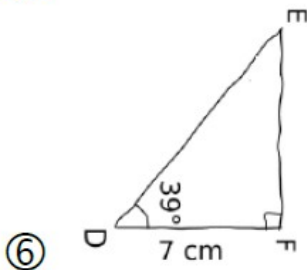
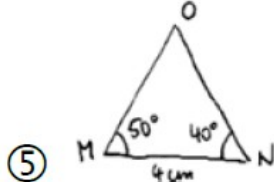
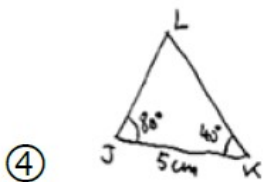
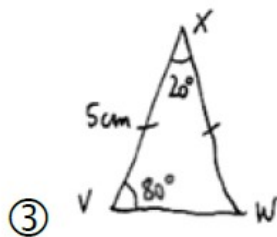
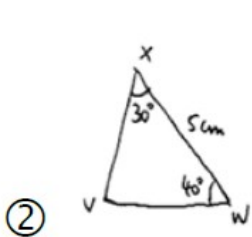
⑧ Reproduire la figure en vraie grandeur



Exercice 2

Construire les triangles ci-dessous, en vraie grandeur, en suivant le parcours fléché.

① Construire un triangle MOI tel que $MO = 7\text{cm}$, $\widehat{MOI} = 25^\circ$ et $\widehat{IMO} = 68^\circ$



Exercice 3

Construire les triangles LED et ISO.

a. LED est tel que $\widehat{LED} = 58^\circ$; $\widehat{DLE} = 37^\circ$ et $ED = 6,5$ cm.

b. ISO est isocèle en S tel que $\widehat{SOI} = 79^\circ$ et $IO = 4,5$ cm.

Exercice 4

Dans chaque cas, construire la figure en vraie grandeur.

a. DEF est un triangle tel que :

$\widehat{EDF} = 115^\circ$, $DE = 7,5$ cm et $DF = 10$ cm.

b. JIH est un triangle tel que :

$\widehat{JIH} = 40^\circ$, $\widehat{IJH} = 70^\circ$ et $IJ = 5$ cm.

c. KLM est un triangle isocèle en K tel que :

$ML = 5$ cm et $KM = 4$ cm.

Exercice 5

a. Rédiger un programme de construction de la figure ci-dessous, puis l'effectuer.

